

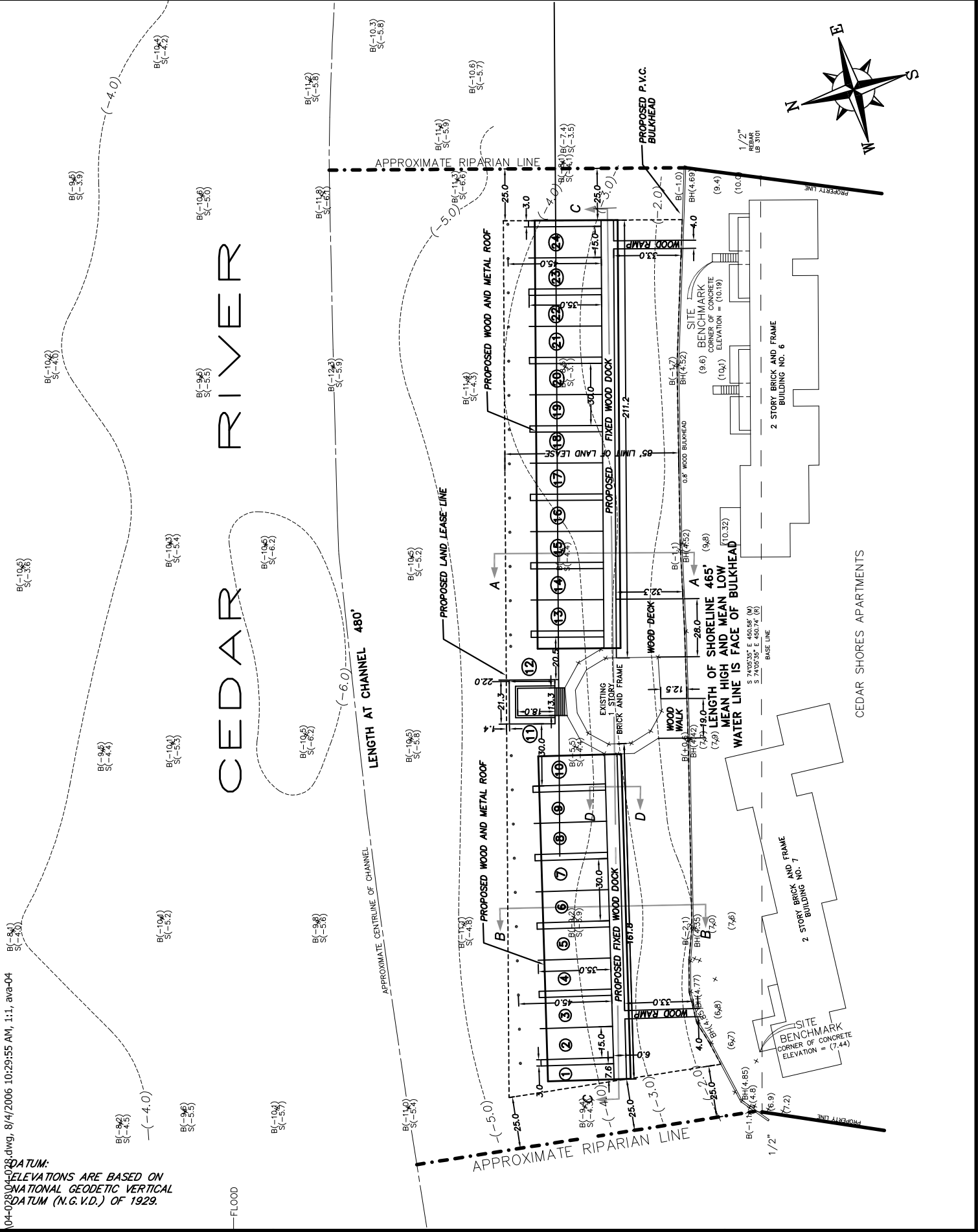
F:\DWG\2004-04-02\104-02\104-02.dwg, 8/4/2006 10:29:55 AM, 1:1, avg-04

DATE DATUM:
 ELEVATIONS ARE BASED ON
 NATIONAL GEODETIC VERTICAL
 DATUM (N.G.V.D.) OF 1929.

Site Plan with Soundings

Cedar Shores Duval County, Florida

Project No.	
Date:	June, 2006
Scale:	1"=60'
Figure	5



CEDAR RIVER

LENGTH AT CHANNEL 480'

LENGTH OF SHORELINE 465'
 MEAN HIGH AND MEAN LOW
 WATER LINE IS FACE OF BULKHEAD

CEDAR SHORES APARTMENTS

SITE BENCHMARK
 CORNER OF CONCRETE
 ELEVATION = (7.44)

SITE BENCHMARK
 CORNER OF CONCRETE
 ELEVATION = (10.19)